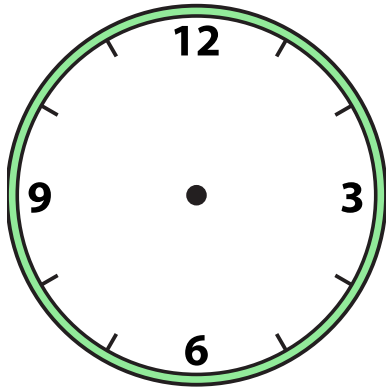




Disegna la lancetta delle ore e dei minuti sull'orologio in modo che rappresenti l'ora indicata.

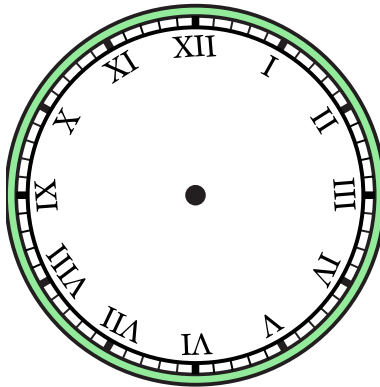
1)

3:30



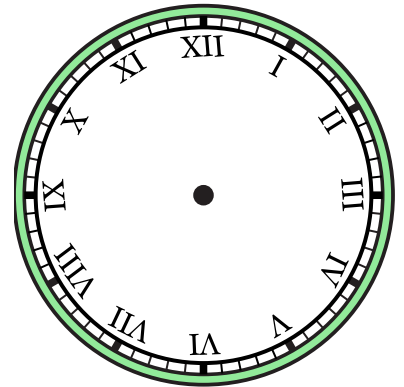
2)

5:30



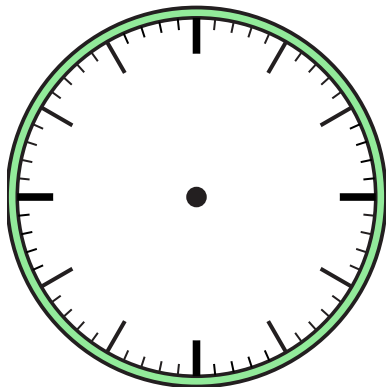
3)

3:00



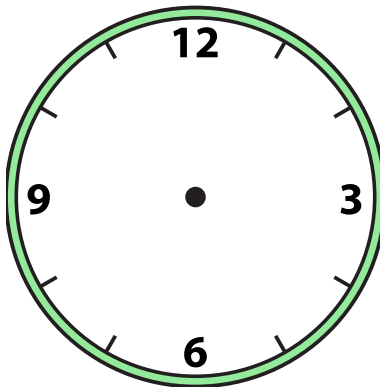
4)

7:00



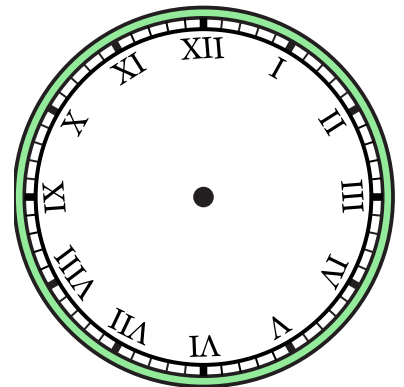
5)

12:30



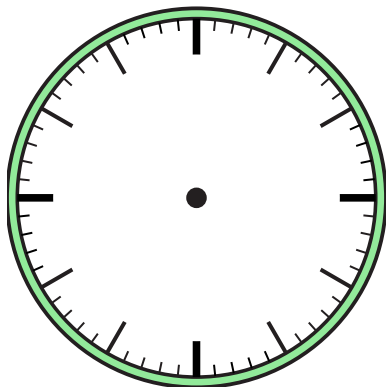
6)

4:30



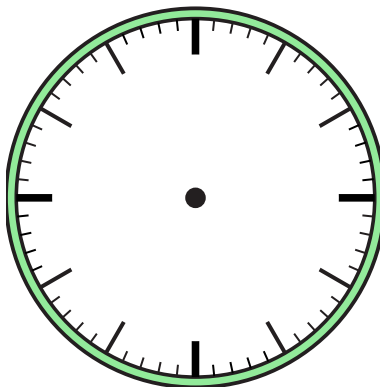
7)

5:00



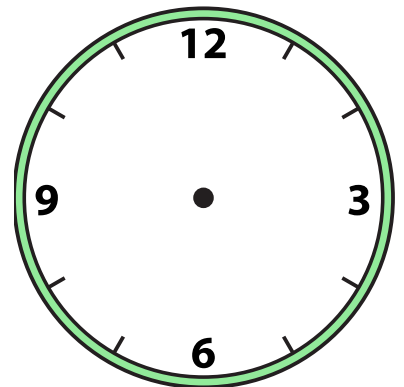
8)

9:00



9)

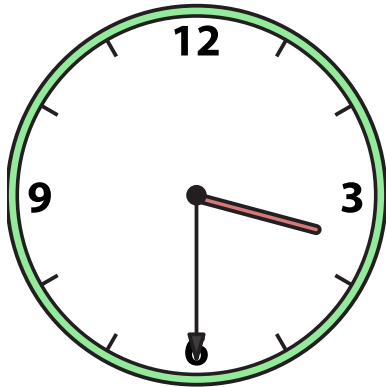
6:30



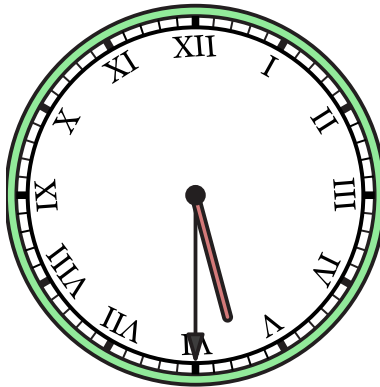


Disegna la lancetta delle ore e dei minuti sull'orologio in modo che rappresenti l'ora indicata.

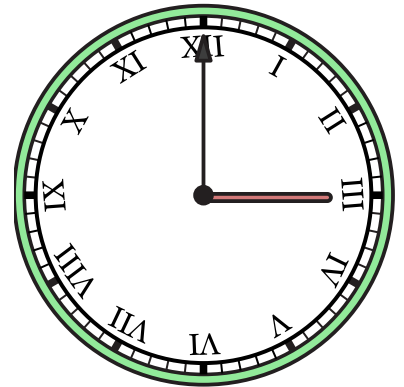
1) 3:30



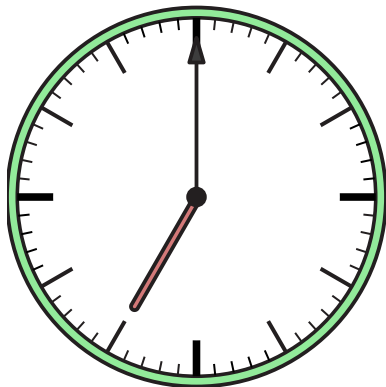
2) 5:30



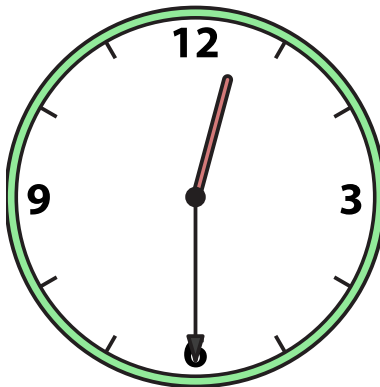
3) 3:00



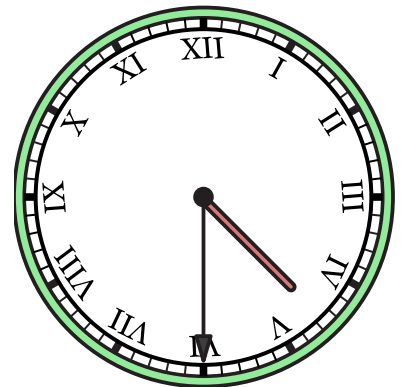
4) 7:00



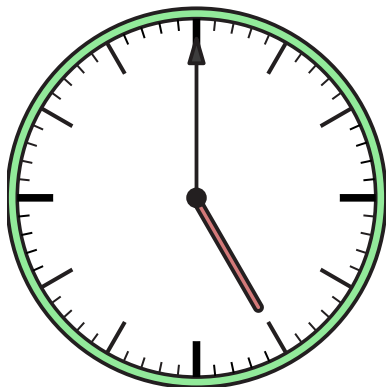
5) 12:30



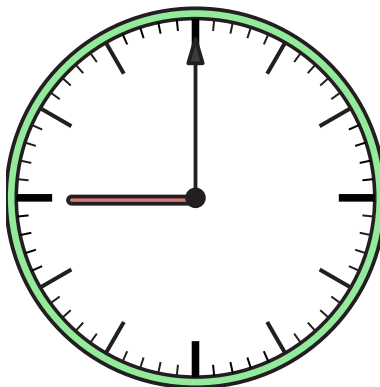
6) 4:30



7) 5:00



8) 9:00



9) 6:30

