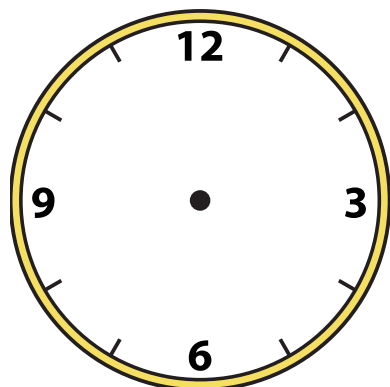




Disegna la lancetta delle ore e dei minuti sull'orologio in modo che rappresenti l'ora indicata.

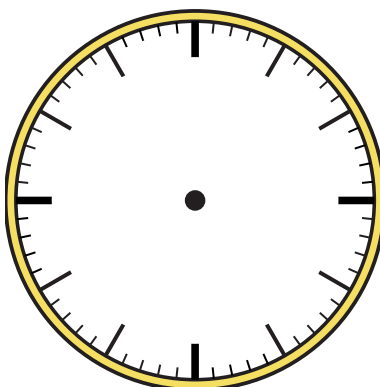
1)

4:30



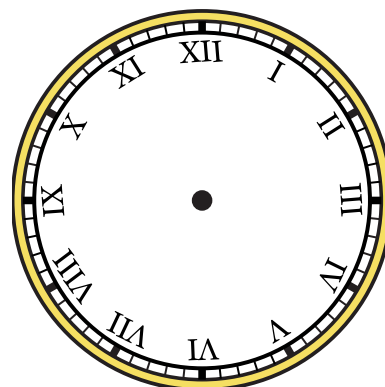
2)

9:30



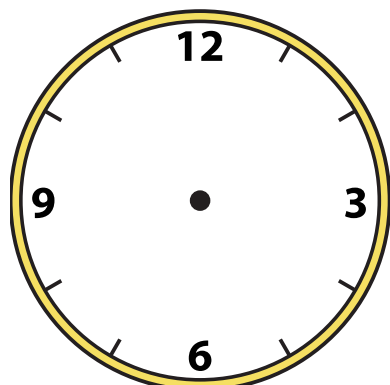
3)

12:45



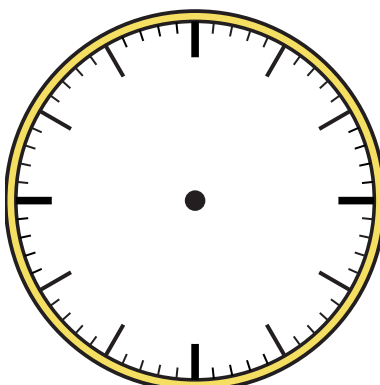
4)

12:00



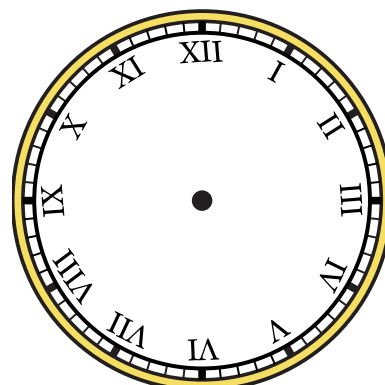
5)

11:00



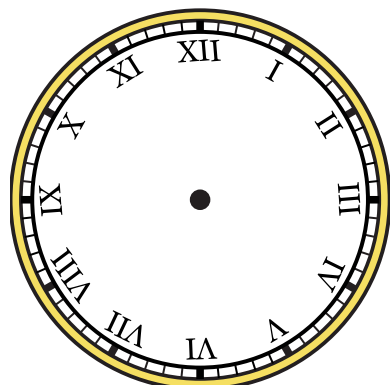
6)

8:15



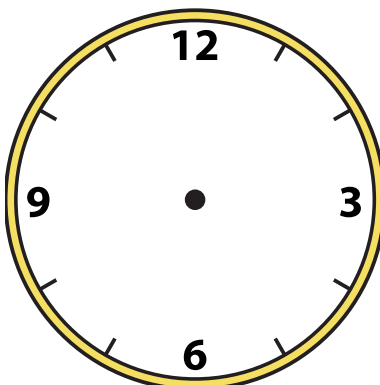
7)

3:00



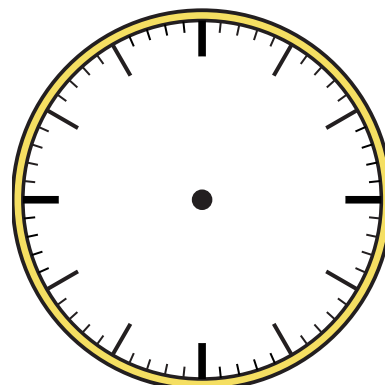
8)

5:30



9)

10:15

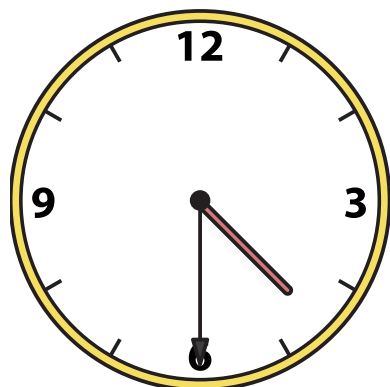




Disegna la lancetta delle ore e dei minuti sull'orologio in modo che rappresenti l'ora indicata.

1)

4:30



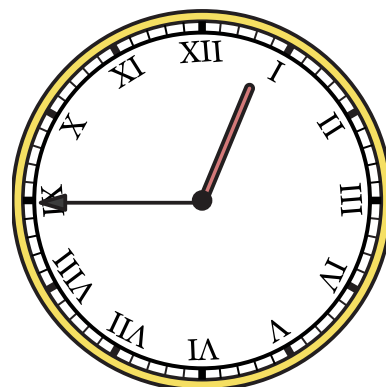
2)

9:30



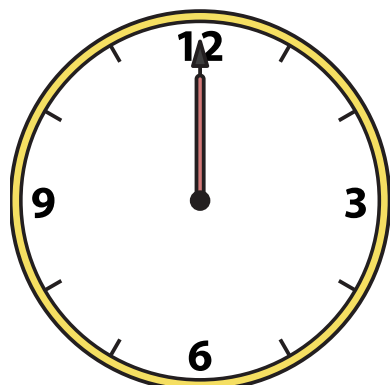
3)

12:45



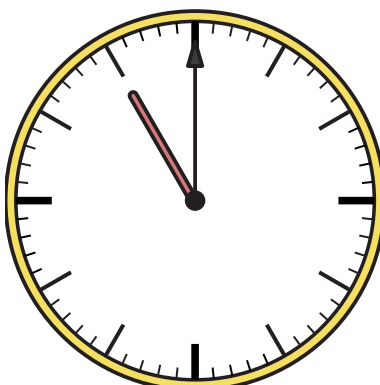
4)

12:00



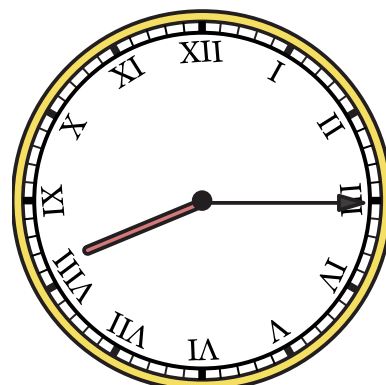
5)

11:00



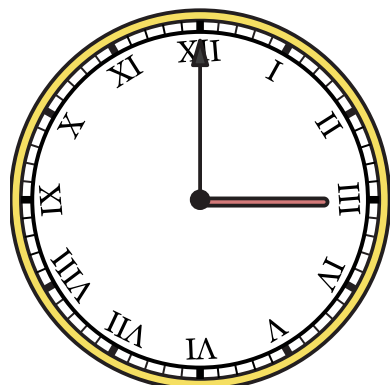
6)

8:15



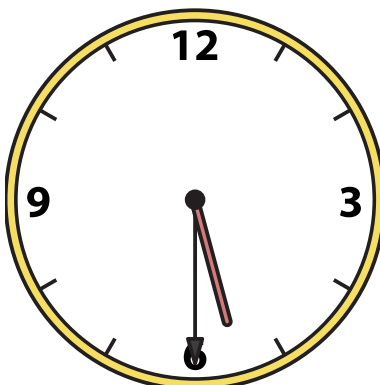
7)

3:00



8)

5:30



9)

10:15

